



INSTRUCTION MANUAL

BTManager

for FC-250 with Windows Mobile® 6.5



Bluetooth® is a registered trademark of Bluetooth® SIG, Inc., U.S.A.

Table of Contents

Getting Started	1
Getting Acquainted	2
Working with Bluetooth Manager	5
Discovering Devices	5
Adding to the List of Favorite Devices	7
Viewing Device Properties	9
Deleting a Device from the List	10
Setting Device Preferences	10
Pairing <i>Bluetooth</i> Devices	12

Notes:

This image shows a single sheet of white paper with horizontal ruling lines. The lines are evenly spaced and run across the width of the page. There are no margins, text, or other markings on the paper.

The BTManager utility controls the FC-250 *Bluetooth* module.

Getting Started

To start BTManager:

1. Turn on the FC-250.
2. Press the *Bluetooth* icon in the system tray, and select **Bluetooth Manager** from the pop-up menu.

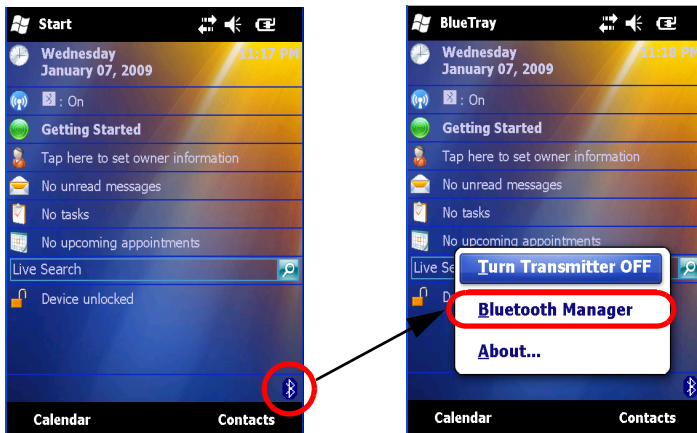


Figure 1. Starting Bluetooth Manager

3. If the *Bluetooth* transmitter is switched off (The *Bluetooth* icon is gray.), select **Turn Transmitter On** to turn on *Bluetooth*.

Getting Acquainted

Table 1 summarizes the screens and settings in BTManager.

Table 1. BTManager Screens

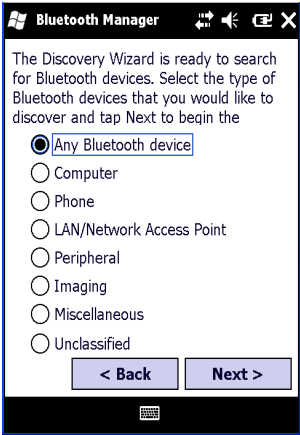
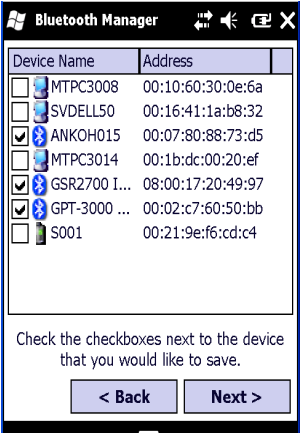
Description	Screen
<p>Type of devices to detect</p> <p>This screen displays types of devices to discover. Once a device type is selected, the <i>Discovery Wizard</i> searches for those devices when you tap Next.</p>	
<p>Device List</p> <p>This screen displays all discovered devices of a selected type. From this list, you can choose a device to add to your <i>List of Favorite Devices</i> by tapping Next.</p>	

Table 1. BTManager Screens (Continued)


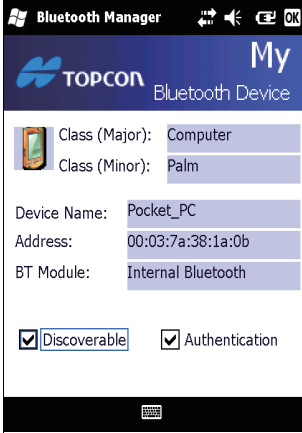


Description	Screen
<p>List of Favorite Devices</p> <p>This screen displays your preferred <i>Bluetooth</i>-enabled devices. You can use the Device Discovery wizard option in the Tools menu or the <i>Bluetooth Devices</i> screen to search for <i>Bluetooth</i>-enabled devices within range and save them to this list for future connections.</p>	
<p>My Bluetooth Device</p> <p>This screen displays the internal FC-250 <i>Bluetooth</i> module information. On this screen, you can set your preferences and choose how to connect with other devices.</p>	

Table 1. BTManager Screens (Continued)

Description	Screen
<p>Pairing</p> <p>This screen displays when the FC-250 is in pairing mode, and it accepts a pairing request initiated by a remote device.</p>	
<p>About BTManager</p> <p>This screen displays version and copyright information for BTManager.</p>	

Working with Bluetooth Manager

Before the FC-250 can pair with another *Bluetooth*-enabled device, it must discover which devices are available within your coverage area. You can use the Device Discovery wizard to search for any *Bluetooth*-enabled device within range or a particular type of device, and then save the device(s) to your *Bluetooth* Devices folder for future connections.

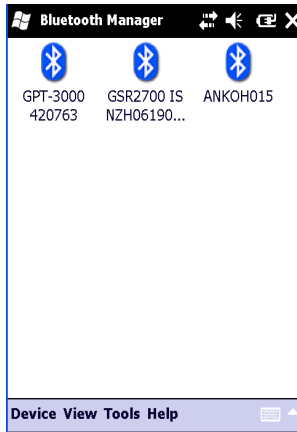


Figure 2. List of Favorite Devices

Discovering Devices

To discover other *Bluetooth*-enabled devices within your coverage area.

1. Tap **Tools ► Device Discovery**.

The *Discovery Wizard* appears (Figure 3).



Figure 3. Discovery Wizard

2. Tap **Next** to display a list of device types.

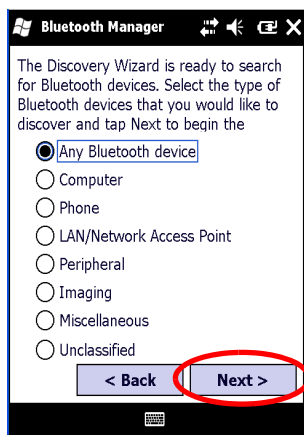


Figure 4. Device Categories

3. Choose a type of device to discover, and tap **Next**.

The *Discovery Wizard* searches for *Bluetooth*-enabled devices in your coverage area and displays the icons of the devices it detects on the ***Device List***.

As device names and addresses are retrieved, the *Device List* updates with detailed information (Figure 5 on page 7).

Once the *Device List* is populated, you can add any device from this list to the *List of Favorite Devices*.

Adding to the List of Favorite Devices

The *Device List* displays all discovered *Bluetooth*-enabled devices in your coverage area.

To add a device from the Device List to the *List of Favorite Devices*:

1. Select a device, and tap **Next**. You can choose more than one device.

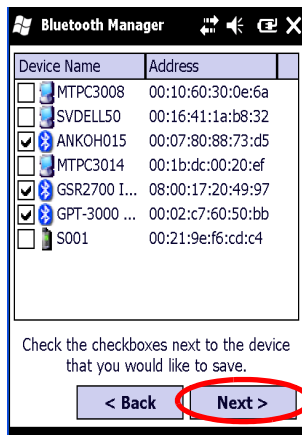


Figure 5. Select Device(s)

A confirmation message appears when the devices are successfully added to the *List of Favorite Devices*.

2. Tap **Finish** to exit the *Wizard* and display the *List of Favorite Devices*.

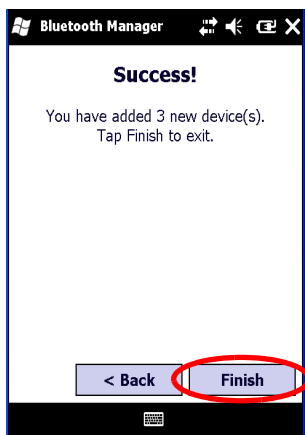


Figure 6. Devices Added

To save time, you can save *Bluetooth*-enabled devices on the *List of Favorite Devices*, so you do not have to rediscover it. You can view devices by icon and name or by name and address.

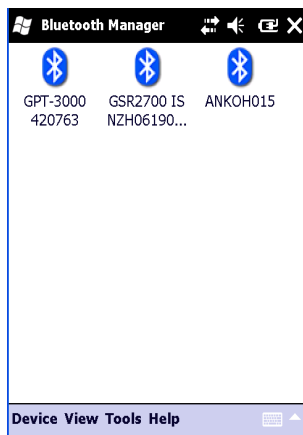


Figure 7. List of Favorite Devices

To display the list of devices by name and address, tap **View ▸ Details**.



Figure 8. Details on *Bluetooth Devices*

Viewing Device Properties

To view the properties of a device, select the device in the *List of Favorite Devices* (Figure 7 on page 8), and tap **Device ▸ Properties**.



Figure 9. *Bluetooth Device Properties*

The ***Bluetooth Device Properties*** screen displays major and minor class identifiers, the name, and address of the selected device.

Deleting a Device from the List

To delete a device from the *List of Favorite Devices*:

1. Select the device, and tap **Device ▶ Delete**.

A confirmation message appears.

2. Tap **Yes** to delete the device.

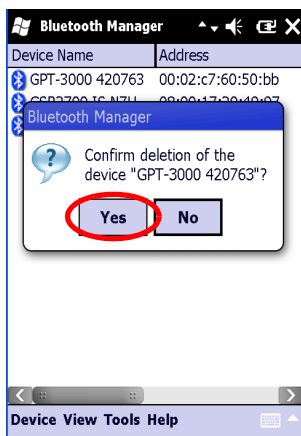


Figure 10. Deleting a Device

Setting Device Preferences

The *My Bluetooth Device* screen (Figure 11 on page 11) displays information about the internal FC-250 *Bluetooth* module. The preferences you set on this screen determine how your FC-250 pairs with and connects to remote devices.

To access the *My Bluetooth Device* screen, tap **Device ▶ My Bluetooth Device**.



Figure 11. My Bluetooth Device

My Bluetooth Device always displays the following information:

- Class (major and minor)
- Name (Other devices use this name to identify the FC-250.)
- Address

This screen also allows you to enable the following accessibility options:

- *Discoverable*: allows other devices within range to find the FC-250.
 - It is not necessary to enable this option when initiating a connection from the FC-250 and for most dial-up networking.
 - When not in use, disable this option manually to save power.
- *Authentication*: authenticates the identity of other devices. Select this option if you want to require a passkey to connect with another *Bluetooth* enabled device. If either or both devices use authentication, then a passkey must be entered. Once Authentication is selected, the Passkey can be edited.



Typically, Topcon *Bluetooth*-enabled GPS receivers do not require a PIN upon connection. If it is necessary, however, the PIN (up to 16 characters) can be set for a Topcon GPS receiver by BTCONF, the Topcon *Bluetooth* module configuration program.



Topcon Total Stations require a PIN on connection. Typically, the PIN value is set to “1111”. This value can be changed.

BTManager allows the FC-250 to connect with other *Bluetooth*-enabled devices using serial port or dial-up services. The connecting device needs to support the service selected:

- SPP (Serial Port Profile): provides serial port connection with peripheral *Bluetooth*-enabled devices, including GPS receivers which normally do not require authentication.
- DUN (Dial-up Networking Profile): provides a standard to access dial-up services over *Bluetooth*. The most common scenario is using a mobile phone as a modem.

Pairing *Bluetooth* Devices

Communication connection between devices is possible by exchanging the PIN (passkey) and the address. Once the authentication is completed and the communication becomes possible, these devices are considered confirmed, and will no longer require any authentication for connection.

The List of Favorite Devices displays all connectable devices around FC-250.



Paring is not necessary to connect with a Bluetooth device without a passkey setup.

Procedures to connect with the Bluetooth device on the List of Favorite Devices are described below.

1. To activate Pairing Mode, tap **Device ▶ Pair**

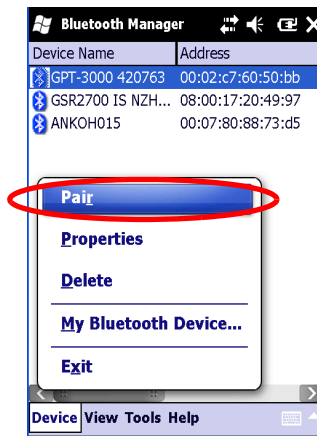


Figure 12. Device Menu - Pairing Enable

The **Pairing** screen appears to guide you through the pairing process.

2. Tap *Next* to continue.

The Wizard searches for the other device.

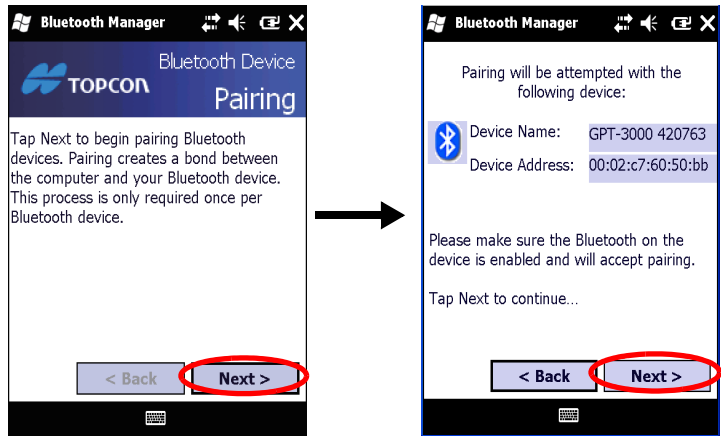


Figure 13. Pairing with Remote device

When the Wizard discovers the other *Bluetooth*-enabled device, you are prompted to enter a passkey (PIN) for authentication. The same passkey must be entered on both devices to establish authentication and pairing. Authentication is only required the first time the two devices pair.

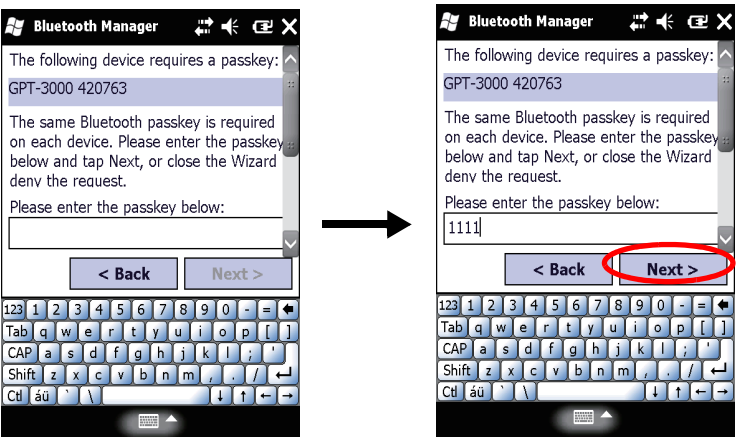


Figure 14. Enter Passkey (PIN)

3. Enter a passkey, and then tap **Next**.
4. If the passkey on the remote device is changed or revoked, an error message appears. Tap **OK** to change the current passkey.

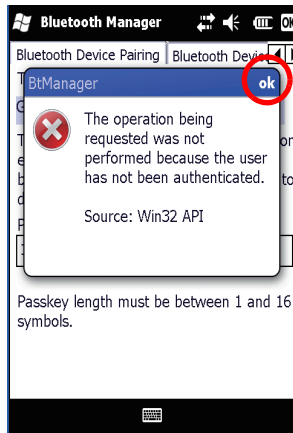


Figure 15. Change Current Passkey

A congratulation message appears when the pairing is successful.

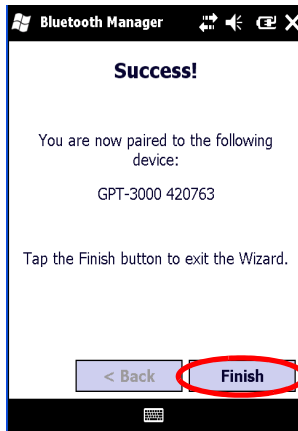


Figure 16. Successful Pairing

5. Tap **Finish** to exit the Wizard.

TOPCON CORPORATION

75-1 Hasunuma-cho, Itabashi-ku, Tokyo 174-8580, Japan <http://www.topcon.co.jp>

Please see the attached address list or the following website for contact addresses.

GLOBAL GATEWAY <http://global.topcon.com/>
